



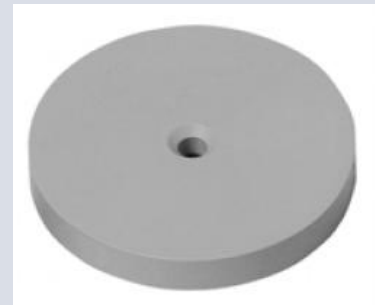
Description:

Following documentation gives an overview about the data carrier mounting solutions which are available at Pepperl+Fuchs. The holders serve for an easy installation of data carriers on the object which has to be identified (e.g. workpiece carrier).

Spacer IPZ-MH50 #042859

The spacer IPZ-MH50 is necessary if data carriers should be mounting directly on metal. The spacer is suitable for mounting of tags which has a diameter of 50mm and a centre hole like following tags:

- IPC11-50 #125744
- IPC02-50P #183298
- IPC03-50P #181531
- ICC-50A #111868
- IDC-50-1K #104893
- IQC21-50P #187484
- IQC21-50F-T10 #197962
- IQC33-50 #207938
- IQC33-50F-T10 #234336



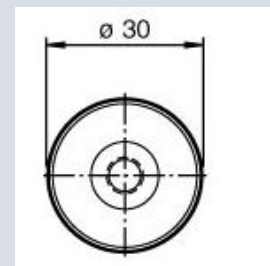
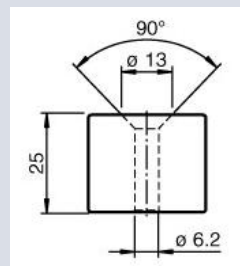
Also the spacer is suitable for tags which have a smaller diameter and a centre hole. But in this case the spacer overlaps the data carrier.

The spacer has an overall height of 7mm and reduces the influences of metal of the reachable read/write distance significant. The spacer can be used for ambient temperatures of maximum 85°C.

Spacer ICZ-MH30-25-T10 #199282

With the help of the spacer ICZ-MH30-25-T10 there is the possibility to mount tags directly on metal in high temperature applications. The spacer is made of Teflon and is specified for ambient temperatures up to 250°C. The spacer is suitable for the mounting of high temperature tags with centre hole like following tags:

- IPC02-26-T6 #191025
- IPC03-54-T8 #122873
- IPC03-58 #182162
- IQC21-50F-T10 #197962
- IQC21-85-T13 #212335
- IQC33-50F-T10 #234336





Mounting aid IVZ-MH15 #184488

The mounting aid IVZ-MH15 is suited of an installation of a tag in a corner of a carrier with an angle of 45°. Thereby it is possible to read the data carrier from two different directions on a transfer station.

The mounting aid has got a fixture hole which allows the fitting of data carrier with different housing dimensions. Following tags can fit flush in the mounting aid:

- IPC02-16 #112426
- IDC-15-1K #038637
- IQC21-16 #214798
- IQC33-16 #215150



The mounting aid has also a centre perforation. Through this it is possible to fix data carrier with a centre hole. The maximum diameter of those tags is 30mm. Following tags can fit in this way:

- IPC02-30P #192202
- IPC02-26-T6 #191025
- IPC03-30P #192203
- IPC11-30 #127930
- IQC21-30P #192204
- IQC33-30 #207937



Bracket with integrated data carrier

IQC22-22CT-T9 #913213

IPC03-20CT #909104

In this bracket there is a data carrier integrated. By the sidewise drill holes the bracket is suited for a vertical mounting on a workpiece carrier. In this case the tag can be read from a head which is mounting on the side of the carrier. The inlay of the tag is the data carrier IQC22-22-T9 which has got a large temperature range. The size of the user memory is 256 Byte E²PROM and is readable by the IQH1-...V1 heads.





It is possible to implement other types of data carrier in the blank housing #903193. In this case you have to observe that the diameter of the inlay is not bigger than 25mm. By the distance to the surrounding material it is possible to mount the bracket flush in metal.



Self-adhesive data carrier IQC21-F125 #913343

On the backside of the data carrier there is a self-adhesive fixation. Through this you get a space between the inlay of the tag and the surface of the object which is to identify. In this case it is possible to mount the tag directly on metal. The memory size of the tag is 112 Byte E²PROM and is readable with heads of the type IQH1-...V1.

